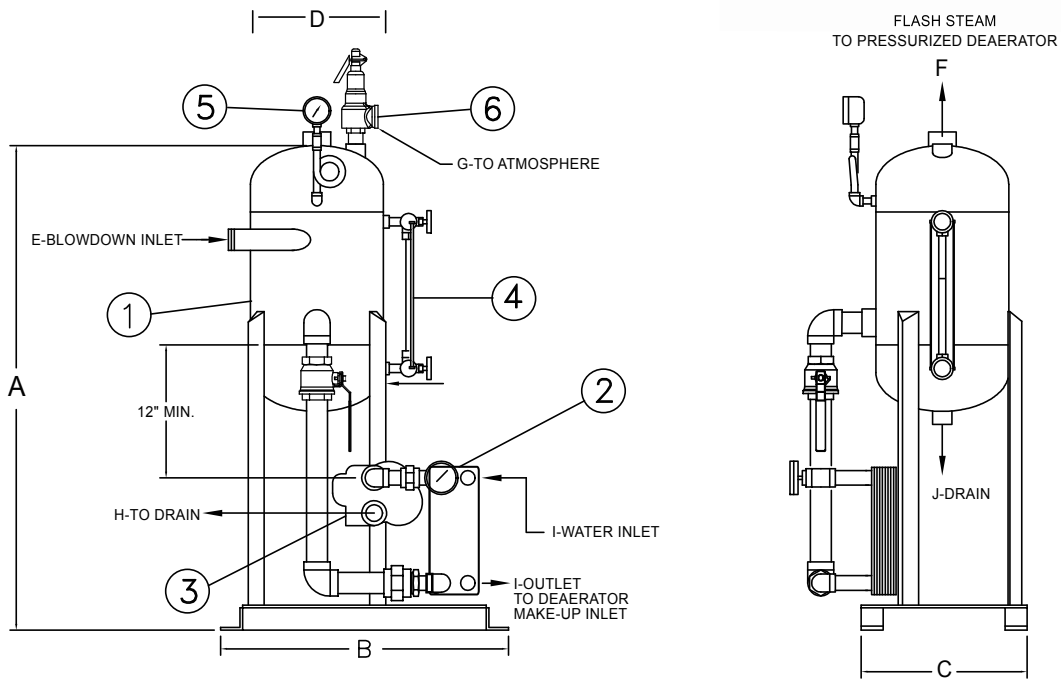
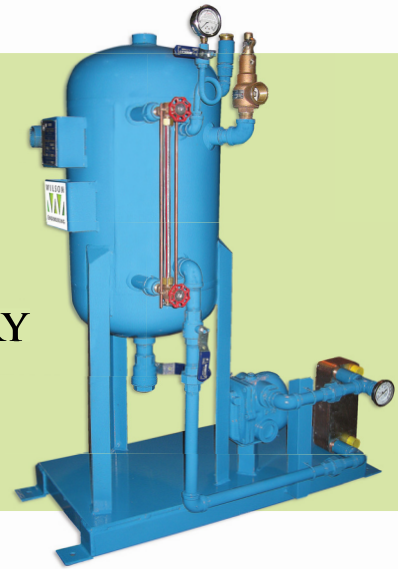


# WILSON Engineering

## Continuous Blowdown Heat Recovery System



### STANDARD COMPONENTS

- 1 FLASH RECEIVER-50LB. ASME CODE AND STAMPED
- 2 HEAT EXCHANGER-BRAZED PLATE
- 3 LEVEL CONTROL-F&T TRAP
- 4 WATER GAGE SET
- 5 PRESSURE GAGE
- 6 PRESSURE RELIEF VALVE (optional)

### OPTIONAL COMPONENTS (not shown)

- THERMOMETERS
- SAMPLE COOLER
- SAMPLE VALVE(S)
- CONTINUOUS BLOWDOWN VALVE(S)
- HIGH WATER ALARM
- DRAIN VALVE
- BACKFLUSH PIPING AND VALVES

SYSTEM MODEL NUMBER	MAKEUP CAPACITY in lbs./hr*	DIMENSIONS IN INCHES										Shipping Weight Approx. in lbs.
		A	B	C	D	E	F	G	H	I	J	
CBHR-5	5,000	54	43	18	16	2	1 1/2	1 1/4	1	1	1 1/2	639
CBHR-10	10,000	54	43	18	16	2	1 1/2	1 1/4	1	1	1 1/2	645
CBHR-25	25,000	54	43	18	16	2	1 1/2	1 1/4	1 1/2	2	1 1/2	689
CBHR-50	50,000	54	43	18	16	2	2	1 1/4	2	2	1 1/2	689
CBHR-100	100,000	72	54	26	24	3	3	1 1/2	2	3	1 1/2	889

